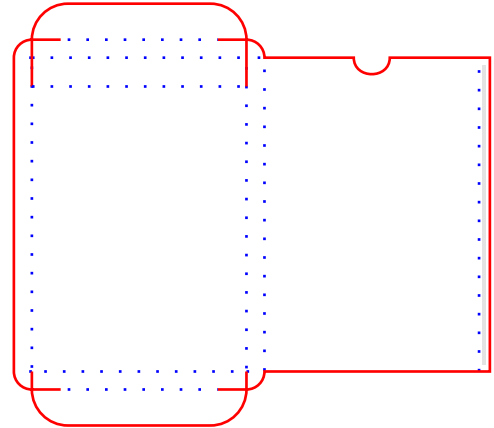


Deathwatch: Overkill Datacards Tuckbox

Instructions

1. Print out at 100%, no scaling.
2. Cut out the print and slice the tabs free.
(black lines on the print,
red on the pattern reference)
3. Score the panel fold lines.
(dashed white on print,
dashed blue on pattern)
4. Test fold the panels to make a box, then unfold.
5. Glue the long, thin tab on the right under the
left-most panel to make the main box.
(the grey box on both print
and pattern is what to glue)
6. Tuck the tabs in appropriately,
gluing the bottom ones if desired.

Pattern Reference



This tuckbox is completely unofficial, unauthorized, and unaffiliated with Games Workshop. All artwork is copyright Games Workshop, and all associated marks, names, races, race insignia, characters, vehicles, locations, units, illustrations, images, and models from the Warhammer 40,000 universe and Deathwatch: Overkill game are either Registered TM, and/or Copyright Games Workshop Ltd 2000--2016. Used without permission, no challenge to status intended, all rights reserved to their respective owners.

